



**NASCOE Leadership established  
the NASCOE Political Action  
Committee (PAC) with  
membership approval in 2005.**

**Contributions to the PAC  
are one way all members can be  
legislatively involved.**

# So, What is a “PAC” ?

- NASCOE’s Political Action Committee (PAC) is an organization that collects funds from members then directs them towards political campaigns of candidates who support NASCOE’s priorities.
- Is it a “special interest group”? **YES!** Because we have a special interest in you and your job!!
- The NASCOE PAC is “mission driven” to get results for our members. **It is NOT a partisan effort.**
- The PAC is the most effective way of ensuring that legislators who support the same views and goals of the Association are elected or able to remain in office.

# Agribusiness Sector PAC Receipts 2022 Election Cycle

American Crystal Sugar	\$3,332,056
National Cotton Council	\$1,328,823
Farm Credit Council	\$1,197,084
National Pork Producers Council	\$ 719,669
Dairy Farmers of America	\$ 434,827
National Turkey Federation	\$ 335,508
National Corn Growers Assn	\$ 412,325
American Soybean Assn	\$ 411,823
USA Rice Federation	\$ 410,272
National Sorghum Producers	\$ 236,647
American Assn of Crop Insurers	\$ 203,629
<b>NASCOE</b>	<b>\$ 176,333</b>
American Peanut Sheller's Assn	\$ 173,357
Rain & Hail Insurance Society	\$ 123,871
National Assn of Wheat Growers	\$ 54,755

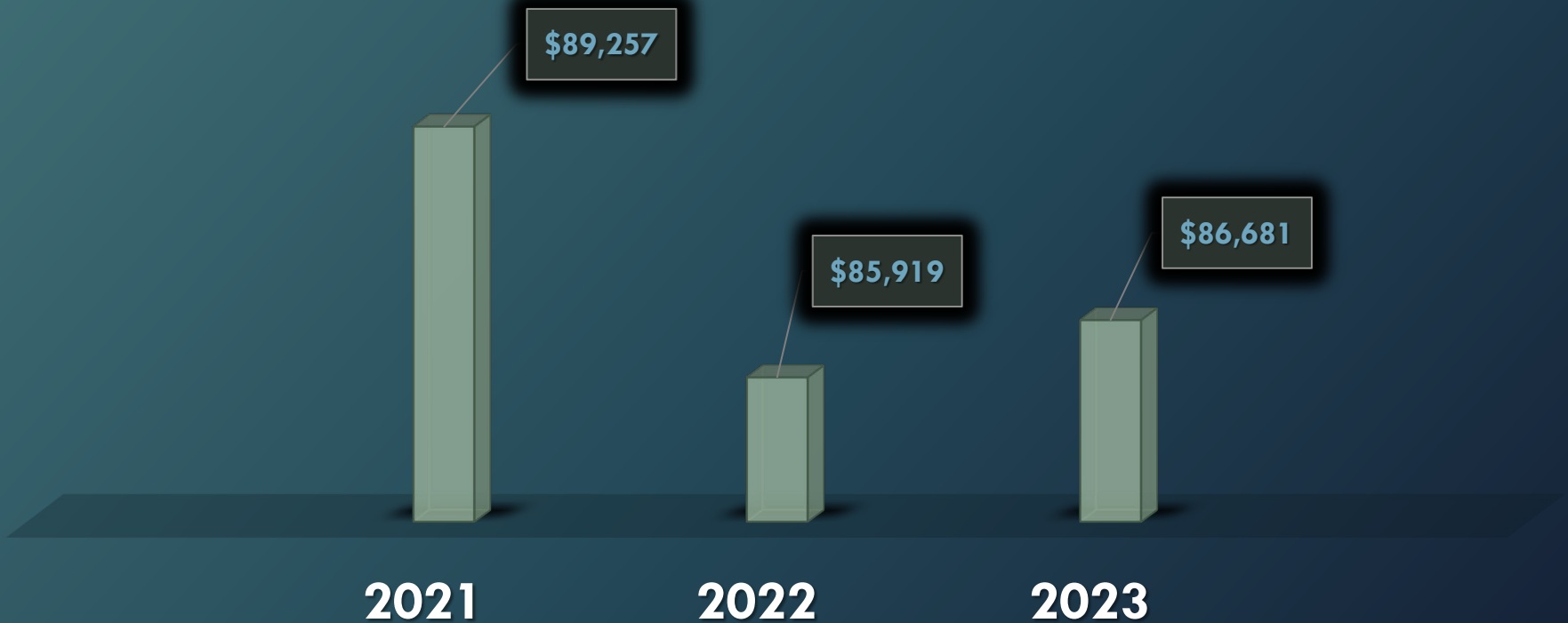
# HOW ARE PAC FUNDS DISPERSED?

- PAC funds are distributed based upon the recommendations of our Legislative Consultant
- These recommendations are reviewed by the President, Vice President and the Legislative Co-Chairs. The recommendation is either approved or denied by this group.
- The funds are primarily used to support the leadership and members of the Senate and House Agriculture Appropriations Committee and the Senate and House Agriculture Committee
- More information can be found at :  
<http://www.opensecrets.org/pacs/lookup2.php?strID=C00413567>

# WHY IS PAC IMPORTANT NOW?

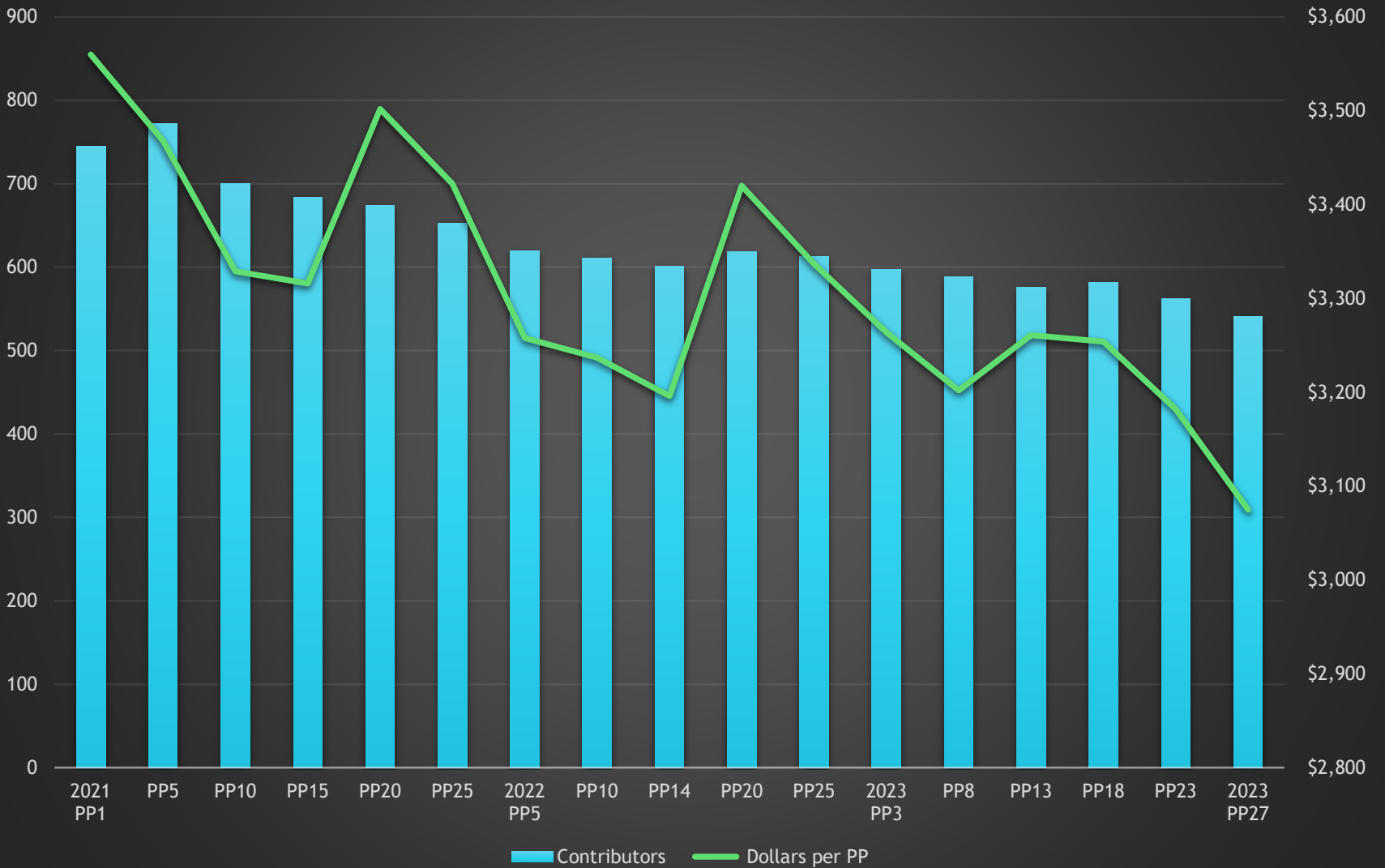
- The way of doing business in Washington D.C. has changed drastically. Without a PAC, doors cannot be opened and we cannot ensure that our voices are heard.
  - Proposed changes in employee benefits
  - Ongoing concern of staffing reductions/office re-structuring
  - Competition for program delivery from other Agencies
- We must show why FSA can be the most efficient agency to help reduce spending and increase efficiency as cuts are being made to programs and agencies.
- **NOW is the time to Act and Protect the Future of Your Job!**  
**To protect, we must be heard.**

# PAC PARTICIPATION



- Staffing changes such as retirements impact our ability to maintain a consistent level of PAC funding.
- New PAC contributors are needed from all levels of the Association's membership to maintain the PAC.

# PAC Donation Trend







Is your job worth the investment of the value of just one of these products every two weeks?

# PAC It Up!



- **Contribute \$3 per pay period or increase your contribution by \$3 and receive a PAC branded leatherette coaster or magnetic lapel pin.**

# PAC It Up!



- Start a new \$5 contribution or increase by \$5 and receive a PAC branded water bottle.
- Start a new \$8 contribution or increase by \$8 and you will receive BOTH items.
- Members who are already contributing in double digits can receive the water bottle for a \$3 per pay period increase.

# How to Enroll



- 1.) Visit the Legislative Booth/Table at a NASCOE event for a PAC enrollment form or find the form online at [nascoe.org/nascoe-pac](https://nascoe.org/nascoe-pac).
- 2.) Hand-deliver the completed enrollment form to a member of the Legislative Committee (or your state's Legislative Chairperson), or email it to [nascoepac@nascoe.org](mailto:nascoepac@nascoe.org).
- 3.) A representative of the Legislative Committee will reach out to provide instruction to establish an allotment in NFC's EPP for the designated contribution. Forward a copy of the EPP confirmation message to [nascoepac@nascoe.org](mailto:nascoepac@nascoe.org).

# One-time Contributions & Associate Members



**One-time Contributions may be made by:**

- NASCOE Associate Members, including those not paid thru NFC, such as retirees
- NASCOE Members

**Hand-deliver or mail a one-time PAC contribution by check to the PAC Coordinator. (See current PAC form for mailing address.)**

**Complete the PAC enrollment form to report the required data, sign the form, and submit with the contribution, noting “one time contribution” on the page.**